

**DCMX
Café**

**Second facility for
reaching customers**

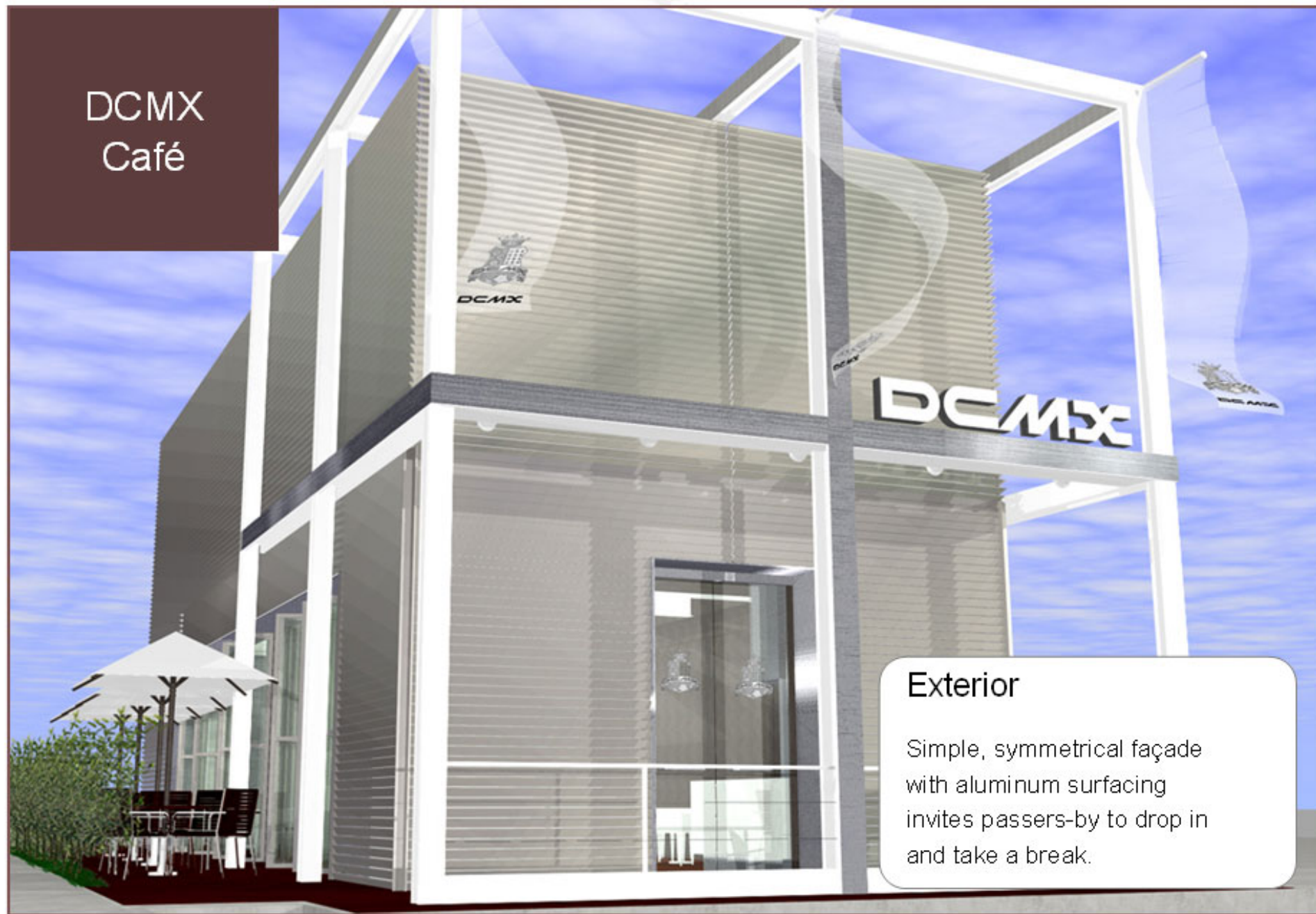
DCMX Café, located in Tokyo's fashionable Omotesando district and with a view of Koto-dori, will be a space where people can enjoy a cup of coffee and then pay with their DoCoMo phone using DCMX.

Opens April 28



3-11-7 Kita-aoyama, Minato-ku, Tokyo

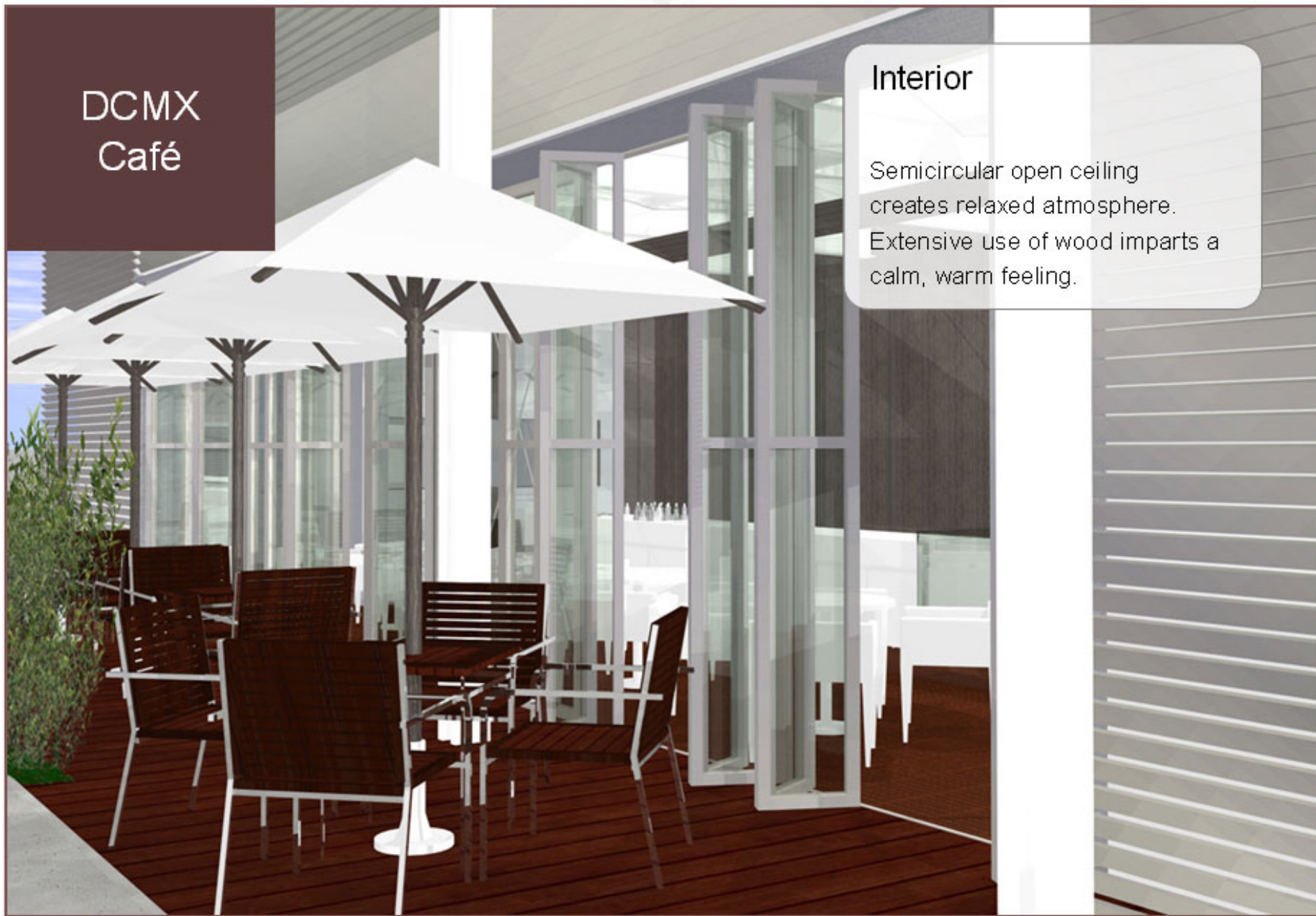
DCMX
Café



Exterior

Simple, symmetrical façade with aluminum surfacing invites passers-by to drop in and take a break.

DCMX
Café



Interior

Semicircular open ceiling creates relaxed atmosphere. Extensive use of wood imparts a calm, warm feeling.